

# RECKMANN

---

operation manual

CZ  
hydraulic furling system



Stand: 27 January 2011

**Copyright by**  
Reckmann Yacht Equipment GmbH  
Siemensstr. 37-39  
D-25462 Rellingen

---

1	Introduction .....	4
1.1.1	Packing list .....	4
1.1.2	How to use this manual .....	7
1.1.3	Important remarks .....	8
1.2	Maintenance of the furler .....	9
1.2.1	Maintenance to be carried out by the customer .....	9
1.2.2	Maintenance to be carried out by a Reckmann service partner .	9
2	Product description .....	10
3	Assembling the furling unit .....	11
3.1	Installation of the furler to the deck .....	12
3.2	Hydraulic connection of systems without brake .....	14
3.3	Hydraulic connection of motors with brake .....	16
4	Operation of the furler .....	18
4.1	Reckmann Quick-Release Pin .....	18
4.2	Topswivel .....	19
5	Specifications .....	22
5.1	Specification CZ furler .....	22
5.2	Specification topswivel .....	23
6	Dealer network and service stations .....	24
7	Index .....	30

# 1 Introduction

## 1.1.1 Packing list CZ

Date \_\_\_\_\_

Customer \_\_\_\_\_

Dealer \_\_\_\_\_

Order number \_\_\_\_\_

Type: CZ \_\_\_\_\_

1	CZ-	_____	t
_____	With motor	_____	
_____	Deckring	_____	
_____	Isolatorring		
_____	Custom deck spacer	(optional)	
_____	Quick-Release Pin		
_____	DIN966	_____	
	Chock plates:		5mm
			10mm
			20mm
			Bottom chock plate
1	Topswivel T-	_____	t
1	Manual	_____	



## Introduction

---

Additional equipment:

---

Packed by

---

---

---

## Introduction

---

Dear Reckmann customer,

With the CZ reefing system you have purchased the latest reefing system which you can rely on. This unit is manufactured using the latest technical innovations and uses the best materials. It is a successful combination of design, performance and safety. We are confident that the CZ reefing system will provide you with enjoyment for many years.

### 1.1.2 How to use this manual

Read this manual carefully before assembly and operation of your Reckmann gear.

Points that need additional attention will be marked in the following way:

**Note!**

This sign marks points which need special attention.

**Warning!**

This sign marks the risk of injuries or other significant danger.

**Tip**

this triangle marks useful tips.

### 1.1.3 Important remarks

After your furling system was installed accordingly to this manual, we recommend to read the following notes carefully before you set your furling system into operation.



#### **Note!**

Improper use according to this manual of the furler may cause loss of warranty.  
Consult a Reckmann service partner in any case of problems.



#### **Warning!**

Any modification or damage may influence the safe operation of the furler.

Please make sure that the furling system is in a well condition according to this manual.



#### **Warning!**

Adjusting with load on the sheet may damage the profile.

Adjust only when sheet is unloaded.

## **1.2 Maintenance of the furler**

To keep the furler in a good optical and technical condition, a regular service is required. Maintenance of the furler consists of two basic points:

- Regular maintenance by the customer
- Regular Service performed by one of our service partners



### **Tip**

Proper operation can only be ensured by regular service. Make sure that the maintenance plan of your furler is carried out carefully.

### **1.2.1 Maintenance to be carried out by the customer**

Clean your furling gear regularly. Wash carefully all salt from the furler.

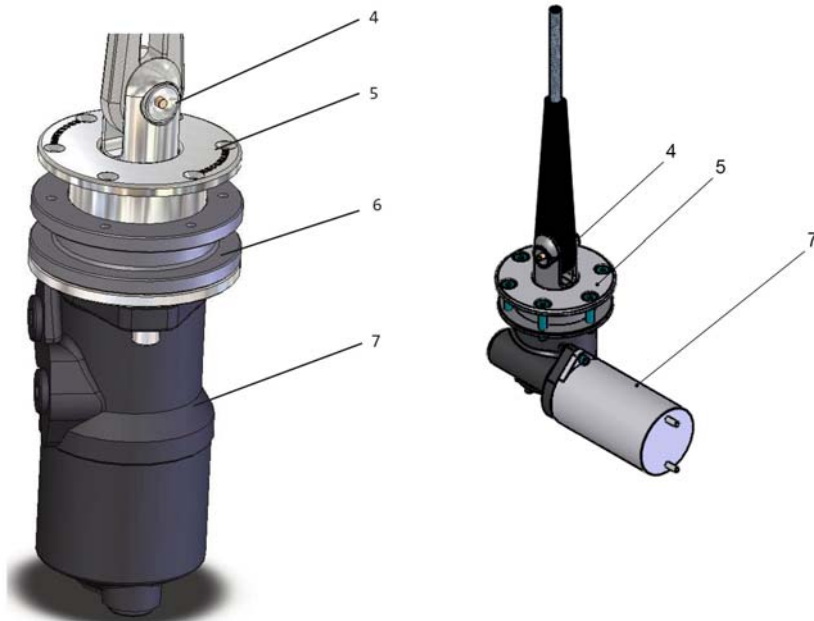
Stainless steel parts can be treated with special care product.

Additional for all electric and hydraulic furling units, the function of the manual backup drive and the condition of all hydraulic hoses / electric wires should be checked regular.

### **1.2.2 Maintenance to be carried out by a Reckmann service partner**

To ensure the safe and proper operation of the furler, it has to be serviced every five years by an authorized Reckmann service partner. A table of all authorized Reckmann service partners can be found at the end of this manual or at [www.reckmann.com](http://www.reckmann.com)

## 2 Product description



- 4 Quick release Pin
- 6 Custom deck spacer

- 5 Deck plate
- 7 Motor (optional with brake)

### 3 Assembling the furling unit

The Reckmann furling unit is installed directly to the deck. The deck has to tolerate the entire stay load.

**Warning!**

Make sure that the deck is strong enough to carry the entire stay load.

**Note!**

When the furler is not aligned with the stay, furler and stay could be damaged.  
Ensure that the stay is aligned with the furler.

**Note!**

Please note that the furler is installed to the deck from underneath.  
Make sure that you have enough space below deck to install the furler.

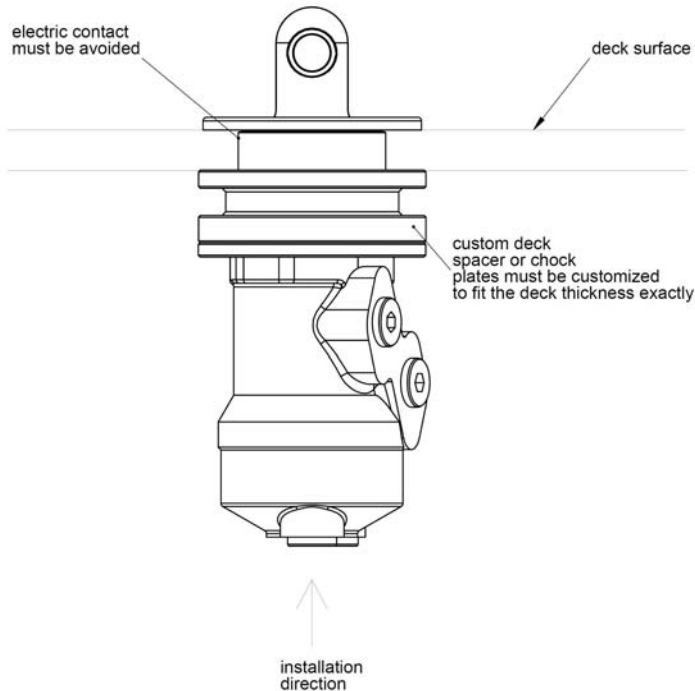
**Note !**

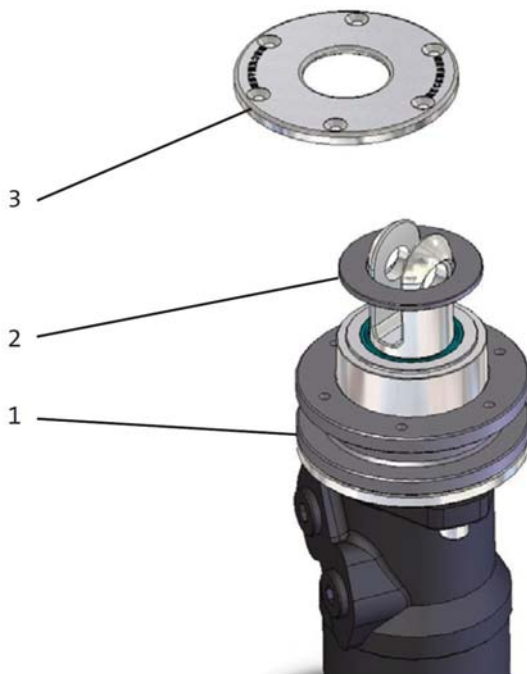
Corrosion may occur between the furler and the deck. Tighten the furler and the deck with Sikaflex or a similar sealing product.  
Between CFK decks and the furler has to be an insulation layer made of GRP

## Assembling the furling unit

### 3.1 Installation of the furler to the deck

The Reckmann code zero furler has to be slid through a deck cut out from underneath. It is secured with a number of bolts which clamp the furler to the deck. To make the furler suit to your deck thickness, a number chock plates or a custom deck spacer ring has to be installed on the motorflange of the furler. Please note that the furler which is shown in the illustration can be different from your furler. Please ensure that the entire furling unit has to be insulated against the deck. Otherwise excessive corrosion may occur. Ensure that the furler is pre-aligned with the stay direction, otherwise the furler or the cable will be damaged by bending loads.





The following steps are necessary for the installation of the furler:  
 Mark the position where the furler has to be installed exactly. Put the deck plate (3) in position and drill all holes for the clamping screws.  
 Now drill the center hole concentric to holes for the clamp holes.  
 Put now the chock plates (1) and the iso-ring (2) on the furler flange and slide the furler from underneath into the deck cut out. Secure the furler with the counter sunk clamp screws.

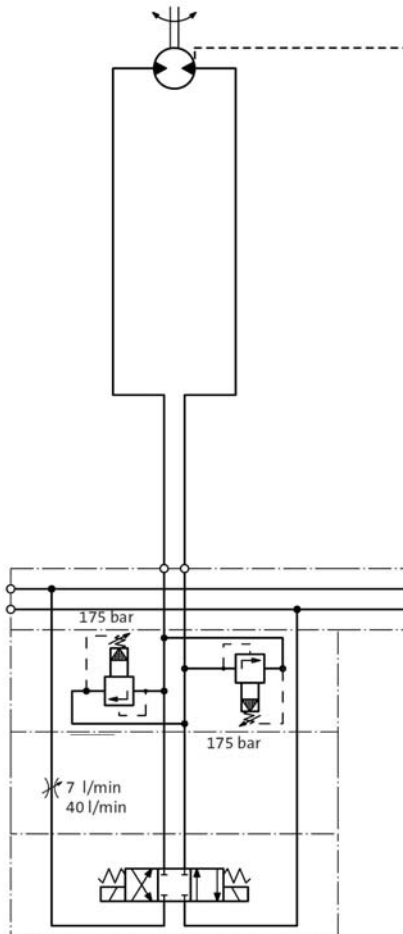


### Note!

Electric contact between furler and deck can cause corrosion problems.  
 Ensure that furler and deck have no direct contact after installation.

## 3.2 Hydraulic connection of systems without brake

The CZ8t Furler should be connected to the system according to the following diagram:



The hydraulic valves are no Reckmann supply.

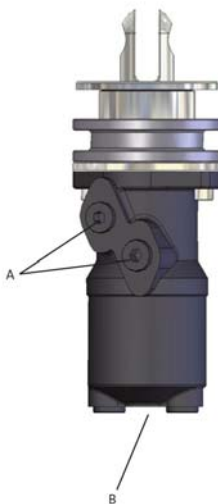
To control the furling operation, the motor is hydraulic fixed. To avoid overloading of the motor, a pressure relief valve with a max. pressure of 175 bar has to be installed between the A and B lines. To control the furling speed, a flow control valve with a max. flow rate of 40l/min for OMR315 and 7l/min for OMR50. Please note that the sail may unfurl due to leakage oil.



### Note!

The sail may unfurl due to leakage oil in the motor.  
Secure the sail against unfurling.

Both main lines A and B are connected to the threads at the side of the motor. The drainline has to be connected to the thread at the bottom of the furler. Thread for the mainlines is G1/2', for the drainline G1/4'.



### 3.3 Hydraulic connection of motors with brake

The hydraulic motor of the Reckmann furler is equipped with an integrated multiple disc brake. To release the brake a hydraulic pressure of 30 - 280 bar has to be at the ventilation port of the brake.

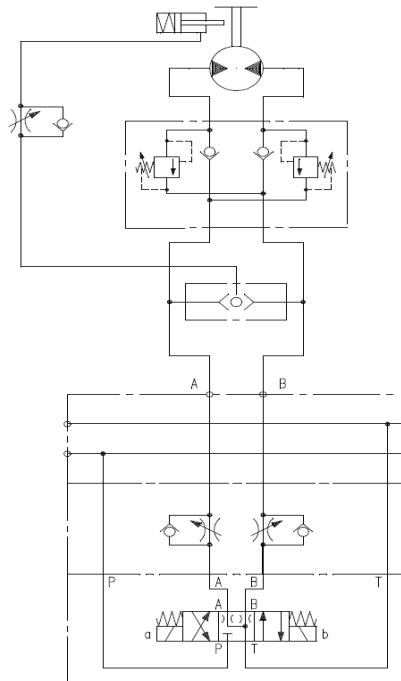
**Note:** Higher pressure can cause damages of the brake  
For a safe handling of the unit you should meet the following instructions:

The motor has to be controlled by a 4/3 way direction valve. Both directions are possible. To limit the revolution speed a flow control valve has to be installed in the return line of the direction valve.

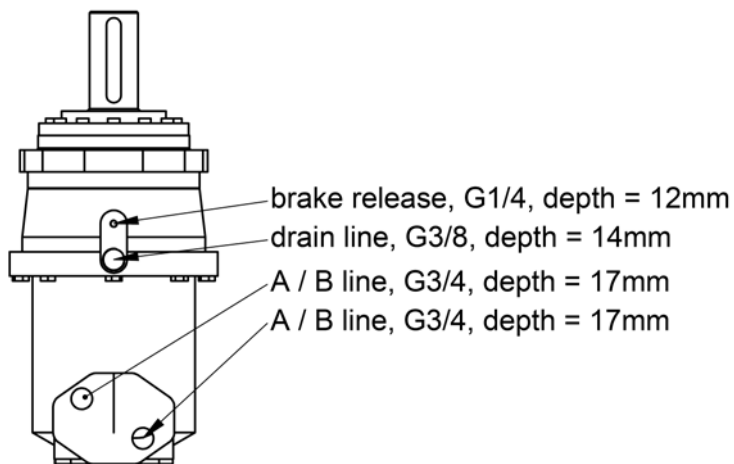
To avoid overloading of the motor in braking operation, two pressure relief valves have to be installed between the direction valve and the motor.

The leakage line of the motor has to be connected to the system. The direction valve of the brake should be operated parallel to the direction valve of the motor.

Please see the table in the annex for hydraulic details of the used elements.



Hydraulic ports of the motor:



# 4 Operation of the furler

## 4.1 Reckmann Quick-Release Pin

To release the self - locking pin press the button (1) and pull the pin out. Check the pin before every use: Push the button and check if the locking ball moves easily. Take care that the button moves out firmly when you stop pushing it in. Flush the pin with fresh water after every use. Salt desposits from sea water can make the pin useless. Replace the pin regularly.

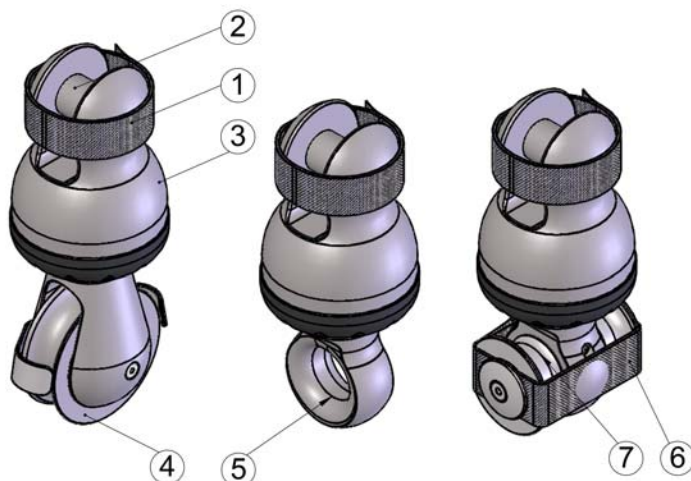


### **Note!**

The function of the pin can be influenced by enviromental impacts. Clean the pin regularly. Ensure the proper function of the pin before use. Replace the pin regularly.

## 4.2 Topswivel

The Reckmann Titanium Topswivel range is available in three different types: To suit a 2:1 halyard setup, to be lashed with a rounded eye and to be lashed with a bone style connector.



2:1 halyard purchase    eye connector    bone connector

- |   |                              |   |                             |
|---|------------------------------|---|-----------------------------|
| 1 | Velcro for stay pin securing | 2 | Stay pin                    |
| 3 | Swivel body                  | 4 | 2:1 halyard sheave          |
| 5 | Halyard connection eye       | 6 | Velcro for lashing securing |
| 7 | Bone connector               |   |                             |



### Tip

Ensure that the halyard can transmit the torque which occurs due to friction in the swivel bearing while rotating under load.

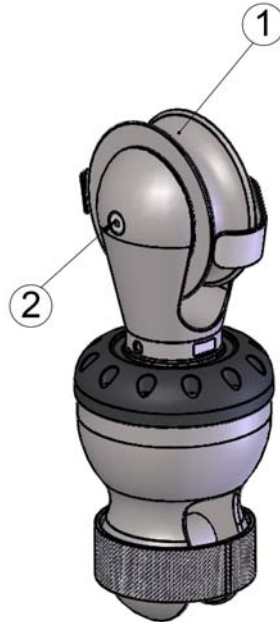
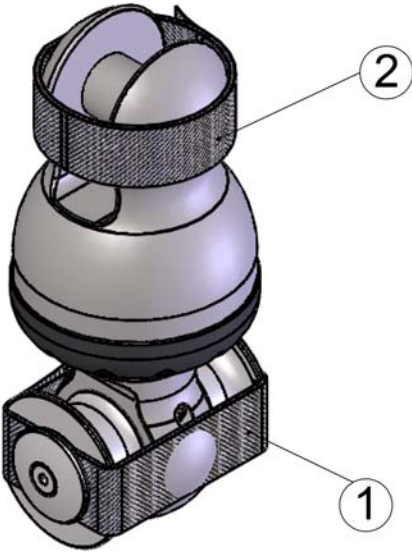
## Operation of the furler



### Warning!

Please replace the webbing and the velcro straps regular.

Please make sure that stay, halyard and 2:1 sheave are secured properly:  
(please see (1) and (2) in the following illustrations)



The bone-style connector should be used with a lashing in the following style:



Make sure that all parts of the lashing are lying properly on the sheaves and that the load distributed evenly on all parts of the lashing.

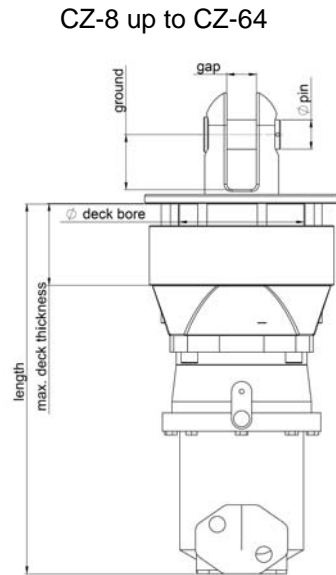
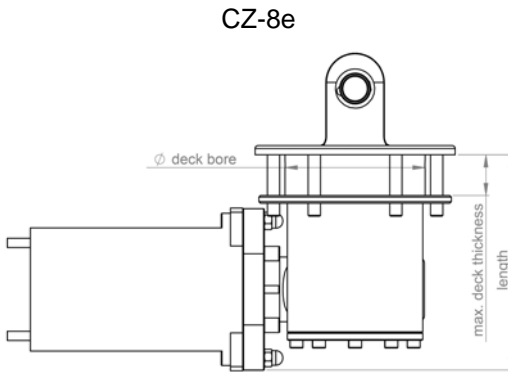


**Note!**

Seizing of threads. To avoid seizing of threads, all threaded parts need to be coated with anti seizing gel before they are joined.

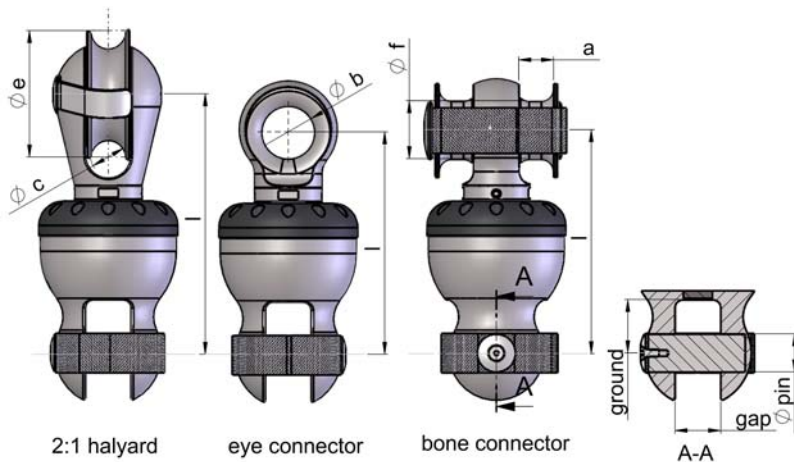
## 5 Specifications

### 5.1 Specification CZ furler



	<b>CZ-8e</b>	<b>CZ-8</b>	<b>CZ-16</b>	<b>CZ-20</b>	<b>CZ-32</b>	<b>CZ-64</b>
SWL [kg]	8000	8000	16000	20000	32000	64000
motor [-]	800W, 24V	OMR 50/315	OMT160 FH/FL	OMT400FL/FH	OMT400FL/FH	OMT400FL/FH
weight [kg]	10,2	12,2	40,66	50,76	53,51	68,33
max. furling moment [Nm]	50	100/560	450	1100	1100	1100
at pmax [bar]	-	140/135	200	180	180	180
at I [A]	50	-	-	-	-	-
furling speed [rpm]	100	100	100	100	100	100
at oil flow [l/min]	-	5/35	20	40	40	40
max. rated Voltage [V]	24	-	-	-	-	-
max. static braking moment [Nm]	-	-	1200	1200	1200	1200
Pin [mm]	20	20	28	32	38	45
Gap [mm]	19	19	28	32	38	45
Ground [mm]	36	36	53	60	68	60
Length [mm]	120	229	355	402	416	434
max. deck thickness [mm]	26	62	87,5	89	97	115
req. deck bore [mm]	91	81	113	135	150	175

## 5.2 Specification topswivel



	TS-12		TS-20			TS-40		TS-64	TS-80	
	2:1	eye	bone	2:1	eye	bone	eye	bone	bone	bone
swl t		12			20		40	64	80	
pin mm		19			25		38	45	55	
gab mm		25			30		38	45	55	
ground mm		29			35		49	58	73	
weight kg	1,5	1,2	1,5	3,2	2,5	3,1	5,5	6,8	15,0	26,0
l mm	98	111	111	129	146	146	190	190	237	280
a mm	-	-	17,5	-	-	22,5	-	27	38	42
b mm	-	26	-	-	35	-	45	-	-	-
c mm	16	-	-	23	-	-	-	-	-	-
e mm	65	-	-	83	-	-	-	-	-	-
f mm	-	-	28	-	-	38	-	49	66	80

## 6 Dealer network and service stations

### Denmark

Southern Spars  
Torben Jacobsen  
Bergensvej 6  
DK-6230 Røddekro  
T.: +45 74 620060  
F.: +45 74 630543  
info@southernspars.com

With Marine A/S  
Leangbutka 31  
N - 1392 Vette  
T.: +47 66 79 89 14  
F.: +47 66 79 74 83  
info@withmarine.no

Quantum Sail Design Group  
Jan Hansen  
Amager Strandvej 50  
DK-2300 København  
T.: +45 7026 1296  
F.: +45 3296 1276

Elvstrøm Sobstad Norge A/S  
Espen Kamperhaug  
Sjøsenteret Vallø-PO Box 148  
N - 3166 Tolsvrød  
T.: +47 3341 4141  
F.: +47 3341 4142  
info@elvstrom-sobstad.no

### Sweden

Sellpower Nordic AB  
Magnus Wosse  
Baggakersgatan 4a  
SE - 43153 Mölndal  
T.: +46 31 761 85 80  
F.: +46 31 876 535  
info@sellpower.se

### **Norway**

Southern Cross Spars A/S  
Sandviksvn 120  
N - 1363 Høvik  
T.: +47 959 77482  
F.: +47 9720 18 18  
ed@southerncross.no

### **United Kingdom**

HYS Rigging  
Dennis Fisher  
Port Hamble  
GB- Hampshire SO31 4NN  
T.: +44 2380 454111  
F.: +44 2380 455682  
rigging@hambleyachtservices.co.uk

### **Netherlands**

A+ Rigging Nederland B.V.  
Zeldenrust 7  
NL-1671 GW Medemblik  
T.: +31 227-544096  
F.: +31 227-544158  
info@aplusrigging.nl

### **Italy**

G&G Rigging srl  
Walter Giovanelli  
Via Mazzini 33  
I-20099 Sesto S. Giovanni  
T.: +39 02 454 811 90  
F.: +39 02 365 138 95  
info@gegrigging.com

### **France**

Gréement Import  
13 Rue du Chêne Lassé - BP  
F-44803 Saint - Herblain  
T.: +33 2 28 03 01 01  
F.: +33 2 28 03 19 91  
bb@greementimport.fr

### **Spain**

Yachttech  
Oliver Blume  
C /Ca'n Valero 40, Nave  
E-07011 Palma de Mallorca  
T.: +34 971 200052  
F.: +34 971 296504  
info@yachttech.net

## Dealer network and service stations

---

### **Croatia**

ASPAR Rigging  
Luzine bb  
CRO-51000 Rijeka  
T.: +385 51 674 031  
F.: +385 - 51 674 031  
aspar-rigging@ri.t-com.hr

Sinera Rigging  
Psg. Joan de Borbó 92  
E-08039 Barcelona  
T.: +34 932 254 934  
F.: +34 932 251 949  
info@sinerarigging.com

### **Slovenia**

DNA d.o.o.  
Miha Spendal  
Kantetova 85  
1000 Ljubljana  
T.: +386 41 730 970  
F.: +386 12776 606  
dnamp@siol.net

### **Malta**

XS Marine Ltd.  
James Xuereb  
26, Paul Borg Str.  
Attard, Atd 2632  
T.: +356 7900 9300  
F.: +356 2141 3894  
info@xs-marine.com

### **Greece**

Kafetzidakis Sails  
Kostas Kafetzidakis  
90 Tzavella  
GR-18533 Piraeus  
T.: +30 210 413 74 38  
F.: +30 210 413 16 24  
info@kafetzidakis.gr

### **Turkey**

UTL / Skiper  
Muhane cad. Akce sokak no 10/4  
Karakoy  
Istanbul  
T.: +90 212 292 90 98  
F.: +90 212 292 91 93  
info@skiper.org

### **New Zealand**

Southern Spars Ltd.  
15 Jomac Place  
Avondale  
NZ-1026 Auckland  
T.: +64 9 8457200  
F.: +64 9 3583309  
info@southernspars.com

New Zealand Rigging Ltd.  
31 Woodside Ave - Northcote  
NZ- Auckland  
T.: +64 9 480 8090  
F.: +64 9 480 9190  
bart@nzrigging.com

**Australia**

Riggtech  
Phill Bate  
Royal Prince Alfred Yacht Club  
2/16 Mitala Street,  
P.O. Box 812  
AUS - 2106 Newport Beach  
T.: +61 2 9997 8100  
F.: +61 2 9979 6848  
info@riggtech.com.au

**USA**

Nance and Underwood  
262 Southwest 33rd st.  
USA - FT Lauderdale, FL 33315  
T.: +1 954 764 6001  
F.: +1 954 764 5977  
nanceandunderwood@aol.com

**Caribbean**

Antigua Rigging Ltd.  
Stan Pearson  
English Harbour  
Antigua, West Indies  
T.: +1 268 4638575  
F.: +1 268 5621294  
info@antiguarigging.com

Euro Marine Trading, Inc.  
Siebe Noordzy  
62 Halsey Street, Unit M  
USA– Newport, RI 02840  
T.: +1 401 849 0060  
F.: +1 401 849 3230  
info@euromarinetrading.com

FKG Marine Rigging  
Kevin Gavin  
37 Wellington Road  
99998 St. Maarten  
Netherlands Antilles  
Tel. +599 544 4733  
Fax. +599 544 2171  
kevin@fkg-marine-rigging.com

Florida Rigging & Hydraulics, Inc.  
3905 Investment Lane, Suite 9  
USA– Riviera Beach, FL 33404  
T.: +1 561 8637444  
F.: +1 561 8637711  
cehinger@rigginghydraulics.com



## Dealer network and service stations

---

Offshore Spars  
Mike Feldmann  
50200 E.Russell Schmidt Blvd.  
USA– Chesterfield, MI 48051  
T.: +1 586 598 4700  
F.: +1 586 598 4705  
mike@offshorespars.com

Rigworks Inc.  
Ray Pope  
2540 Shelter Island Drv.  
USA - San Diego , CA 92106  
T.: +1 619 223 3788  
F.: +1 619 223 3099  
info@rigworks.com

Rigg Pro  
14 Regatta Way  
USA - Portsmouth, RI 02871  
T.: +1 401 683 2151  
F.: +1 401 683 7878  
john.b@southernspars.com

## 7 Index

- Assembling the furling unit 11
- Dealer network and service stations 24
- How to use this manual 7
- Hydraulic connection of motors with brake 15
- Important remarks 8
- Installation of the furler to the deck 12
- Introduction 4
- Maintenance of the furler 9
  - Maintenance to be carried out by a Reckmann service partner 9
  - Maintenance to be carried out by the customer 9
- Operation of the furler 18
- Packing list 4
- Product description 10
- Reckmann Quick-Release Pin 18
- Specification CZ furler 22
- Specification topswivel 23
- specifications 22
- Topswivel 18